

FOR IMMEDIATE RELEASE

Expanding Earth: New Works by Yukiya Izumita

September 12 - October 3, 2024 | Opening Reception featuring the Artist: September 12, 6–8PM.



Top: Sekisoh, 2020, ceramic, H15.74 x W30.7 x D8.66 in, H40 x W78 x D22 cm (C21913). Photo courtesy of Douglas Dubler 3.

Bottom: Layer Tea Bowl, 2023, ceramic, H3.74 x W4.72 x D3.93in, H9.5 x W12 x D10 cm (C26569NP). Photo courtesy of Douglas Dubler 3.

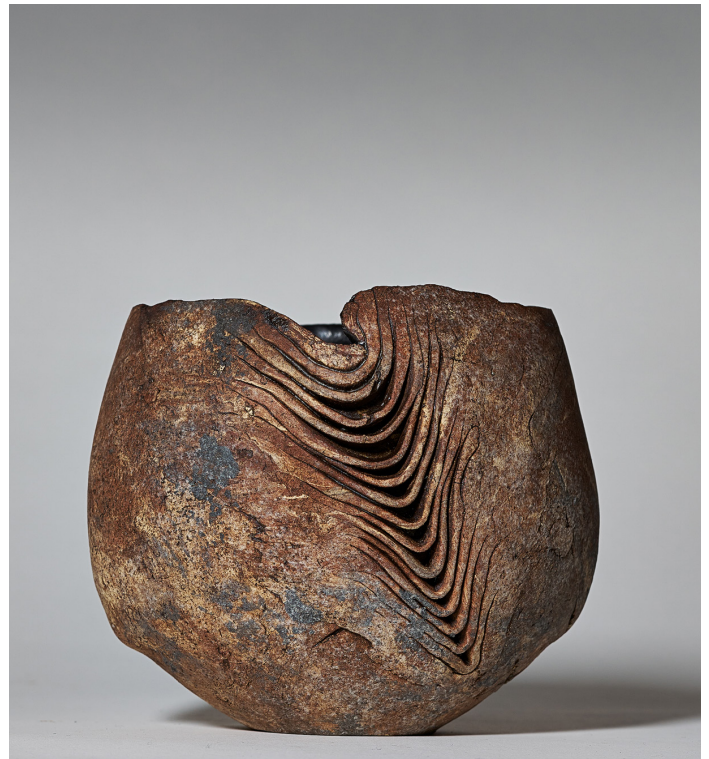
New York, NY – Ippodo Gallery presents **Expanding Earth: New Works by Yukiya Izumita**, the leading ceramicist's return to New York for his fifth solo exhibition in the United States. Over 40 of Izumita's latest laminate-layered sculptures, flat-folded vases, and tea bowls are on view from **September 12 to October 3, 2024**. Izumita's unseen sceneries of earthen formations demonstrate his capacity to push the physical constraints of hand-built ceramic and miraculously defy the laws of gravity withstanding the intensity of the anagama tunnel-kiln fire.

Yukiya Izumita (b. 1966) has established himself as a most innovative ceramicist from his remote kiln in Japan's north-east Tohoku region. He seamlessly integrates the geographically-specific elements of Iwate Prefecture—namely its harsh northern climate and rural seaside locale—into the black, yellow, and red clay. Izumita hand-carries the coastal clay back to his studio in huge loads and driftwood, too, is an aspect of his craft;



his creations are born from what is washed ashore and the sea-soaked salvages lend a rudimentary salt-firing element that appears rustic and ancient encased in rare manganese glaze. Izumita seeks out a language of lightness in his sculptures that expertly disguises the heavy reality of earth. His designs seem to float without concern; the ceramic walls are shaped on paper sheets at calculated angles in perfect balance. The salt-rich clay is combined with Chamotte to emulate the rough-hewn texture and colors of Iwate's sea-battered cliff faces like a fossil record of the passage of time.

Izumita's expression of rock, geochronology, and the tumultuous landscape is deeply intertwined with the sorts of wares he sculpts. He is not ambivalent towards functionality, and in fact Izumita first trained under potter Gakuho Shimodake in Kokuji-ware, which is long lauded within the mingei movement. Izumita persists in Noda Village despite tsunami and other disasters that test his ceramic practice; he has subsumed these experiences into a sensibility for the delicate and naturalistic. His rhythmical and dynamic sheets of clay folded into looping spirals and stacking layers are like the rolling tides breaking on the shore.



Left: Henko Pot B, 2023, ceramic, H12.4 x W15.35 x D5.9 in, H31.5 x W39 x D15 cm (C26919). Photo courtesy of Douglas Dubler 3.

Right: Sekisoh Tea Bowl, 2023, ceramic, H4.33 x W4.92 x D4.13 in, H11 x W12.5 x D10.5 cm (C26567NP). Photo courtesy of Douglas Dubler 3.

Iwate and its climate are as much a part of Izumita himself as his sculptorly hands. At home amongst the weathered land and seascapes, Izumita remains devoted to authentically representing the realities of Japan's inhospitable northern coasts. His works are exhibited to wide acclaim across Japan, and now, as he prepares for his fifth solo exhibition with Ippodo Gallery New York, Izumita's ceramics are held in the permanent collections of world-class collections including the Philadelphia Museum of Art, Yale University Art Gallery, and Minneapolis Institute of Art. In Japan, Izumita is the recipient of accolades including the Excellence Award at the 20th Biennial Japan Ceramic Art Exhibition in 2009 and the Asahi Ceramic Exhibition Grand Prix in 2000 and 2002.

Ippodo Gallery and Yukiya Izumita welcome a collaboration with Bronze Craft Foundry to cast a limited edition of sculptures from the artist's original ceramic forms, which will also be included in the exhibition.



Top: Sekisoh Object, 2023, H7.87 x W13.22 x D5.19 in, H20 x W33.6 x D13.2 cm (C27312NP). Photo courtesy of Douglas Dubler 3.
Bottom: Sekisoh Teabowl, 2023. H3.81 x W5 x D4.64in, H9.7 x W12.8 x D11.8 cm (C27314NP). Photo courtesy of Douglas Dubler 3.

About the Gallery

Ippodo Gallery is a cultural bridge to Japan's living master artists. Founded in Tokyo (1996-), the New York gallery (2008-) presents fine handcrafted and rare works created using traditional materials and methods. Each piece selected embodies Japanese aesthetic sensitivity that is born of a spiritual bond with nature. Ippodo's exhibition program features unique objects — fine ceramics, lacquerware, metal crafts, sculpture, paintings, and works on paper — that celebrate human invention, the natural world, and sublime beauty.

For more information and images, please contact:

Shoko Aono

New York Gallery Director
212.967.4899
Shoko@ippodogallery.com

Jesse Gross

Sales and Gallery Associate
212.967.4899
mail@ippodogallery.com

